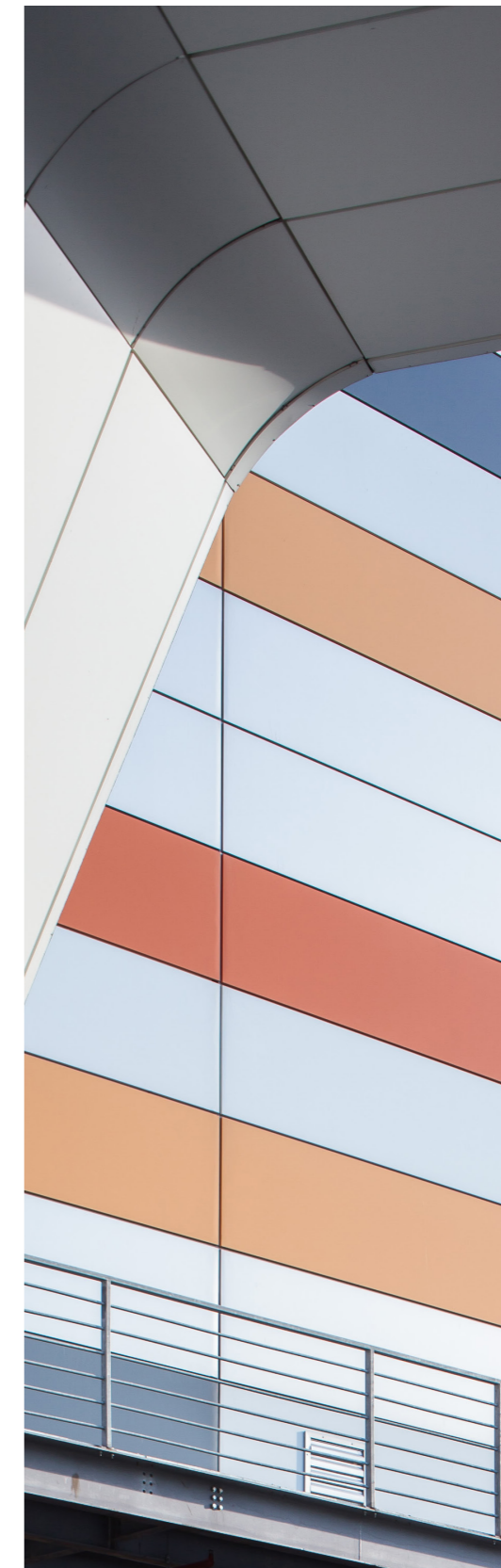


TRIMO

ARCHITECTURAL
SOLUTIONS



Regions covered by the Confidex® Guarantee



■ Northern Europe - Zone 1 ■ Southern Europe - Zone 2
■ For areas outside of Confidex® zones please contact Tata Steel for more information.

The standard guarantee for Qbiss modular façade elements is 10 (ten) years from the date of dispatch unless agreed otherwise.

External steel products are hot dip galvanised pre-finished steel (according to EN 10346) and produced with coil coating technology. External products are available for different corrosion environments as defined for certain projects.

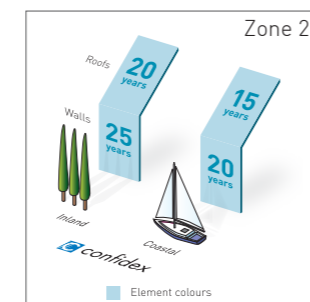
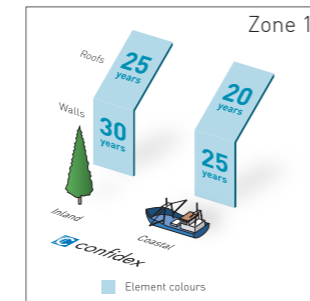
Organic paint protections are available for environment corrosion classes up to C5, (according to classification in EN12944).

Trimo anti corrosion guarantees for wall application of special metallic and solid colours:

C5 = 12 years
C4 = 15 years
C3 = 25 years

Special guarantees terms and conditions apply when using Colorcoat Prisma® Element colours with the Confidex® Guarantee by Tata Steel. This is for the weatherside of Colorcoat Prisma®.

Confidex® Guarantee for Colorcoat Prisma®



Notes

1. Figures under the Coastal heading are for buildings within 1 km of any coast (Only valid for Qbiss One and Qbiss Screen MW). The Confidex® Guarantee is applicable for the weatherside (directly exposed to rain and sun) steel sheet.
2. Full terms and conditions of the Confidex® Guarantee are on the online application form, available at www.colorcoat-online.com/registration
3. Confidex® must be registered within 3 months of the building completion date for the guarantee to be valid.
4. The Confidex® Guarantee periods on the diagram above are applicable to Zone 1 and Zone 2. For more information on other zones visit www.colorcoat-online.com/confidexmap

Published by Trimo d.o.o. | Version 4.0 | 02/2023

TRIMO D.O.O.

PRIJATELJEVA CESTA 12,
8210 TREBNJE, SLOVENIA
T: +386 (0)7 34 60 200
F: +386 (0)7 34 60 127
QBISS@TRIMO-GROUP.COM
WWW.TRIMO-GROUP.COM

TRIMO



All information issued by Trimo Group is subject to continuous development and information/details contained on this media are current at date of issue. It is user's responsibility to obtain most up-to-date information from Trimo when information/details are used for project. The last version of the document is available on: www.trimo-group.com/en/trimo/downloads/brochures/

QBISS - COLOUR CHART

INTRODUCTION

With exceptional technical characteristics and perfect visual expression, Trimo façade systems easily adjust to your vision of space.

- Unique and functional solutions with a long-life span.
- State-of-the-art technical characteristics.
- Certified quality.
- Reduced construction time.
- Excellent fire performance, noise and thermal insulation.
- Attractive appearance through a wide selection of colours and shapes.

Trimo 's range of metal façade systems:

- Qbiss One - Prefabricated architectural façade system.
- Qbiss Screen - Innovative metal rainscreen.



SPECIAL METALLIC



Silver



Light Silver



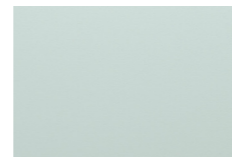
Dark Silver



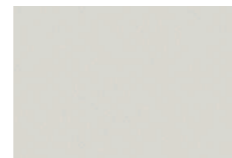
Light Graphite



SOLID COLOURS



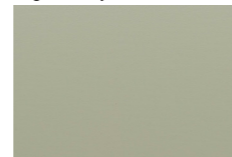
White



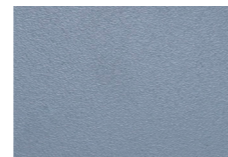
Grey White



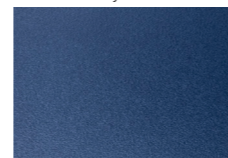
Light Grey



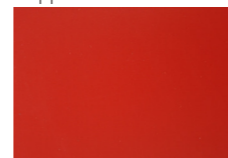
Cream



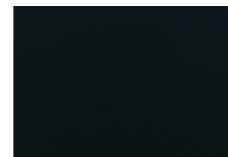
Basalt Grey



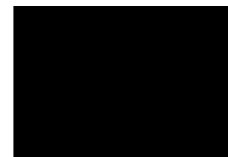
Sapphire Blue



Traffic Red



Anthracite



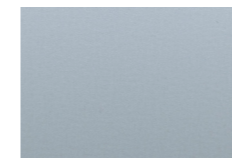
Black



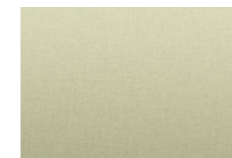
COLORCOAT PRISMA® ELEMENTS*



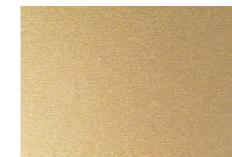
Seren White



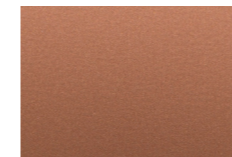
Seren Silver



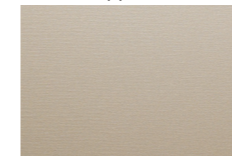
Seren Gold



Seren Midas



Seren Copper



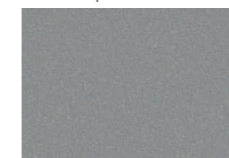
Seren Titan



Seren Black



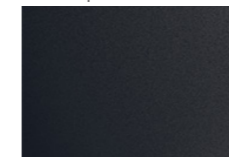
Sirius Sparkle



Orion Sparkle



Zeus Sparkle

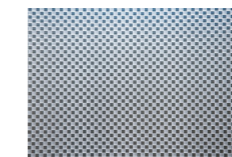


Anthracite Solet



BESPOKE SOLUTIONS AND MATERIALS

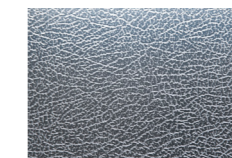
On a project-by-project individual basis Trimo can provide a bespoke solution of Qbiss facades from STAINLESS STEEL in imitation of Corten, Copper, Wood, Stone etc. in order to preserve the longterm value of the building and provide a unique architectural solution & appearance. Availability and application shall be discussed with Trimo technical department.



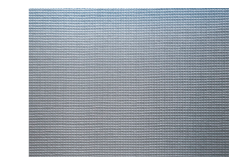
Quadro Lucido



2WL Lucido



Pelle Lucido



Dots Lucido



5WL Lucido

Notes

Colour range does not in any case define delivery terms or any other terms of specific skin colour. Colour range presented shows only a fraction of most usable colours within the variety of colours available. Colours may slightly deviate due to different monitors and prints compared to original colours. Trimo can send you a metal swatch upon request.

COLOUR REFERENCE TABLE

Special Metallic

TRIMO COLOUR	NEAREST RAL OR OTHER REFERENCE COLOUR
SILVER	RAL 9006
LIGHT SILVER	N/A
DARK SILVER	RAL 9007
LIGHT GRAPHITE	N/A

Solid colours

TRIMO COLOUR	NEAREST RAL OR OTHER REFERENCE COLOUR
WHITE	RAL 9010
GREY WHITE	RAL 9002
LIGHT GREY	RAL 7035
CREAM	RAL 1015
BRIGHT YELLOW	NCS S 1070 Y10R
BASALT GREY	RAL 7012
SAPPHIRE BLUE	RAL 5003
TRAFFIC RED	RAL 3020
ANTHRACITE	RAL 7016
BLACK	RAL 9005

Colorcoat Prisma® Elements*

TRIMO COLOUR	NEAREST RAL OR OTHER REFERENCE COLOUR
SEREN WHITE	[Colorcoat Prisma® COLOUR]
SEREN SILVER	[Colorcoat Prisma® COLOUR]
SEREN GOLD	[Colorcoat Prisma® COLOUR]
SEREN MIDAS	[Colorcoat Prisma® COLOUR]
SEREN COPPER	[Colorcoat Prisma® COLOUR]
SEREN TITAN	[Colorcoat Prisma® COLOUR]
SEREN BLACK	[Colorcoat Prisma® COLOUR]
SIRIUS SPARKLE	[Colorcoat Prisma® COLOUR]
ORION SPARKLE	[Colorcoat Prisma® COLOUR]
ZEUS SPARKLE	[Colorcoat Prisma® COLOUR]
ANTHRACITE SOLET	[Colorcoat Prisma® COLOUR]

*Colorcoat Prisma and Seren are trademarks of Tata Steel UK Limited